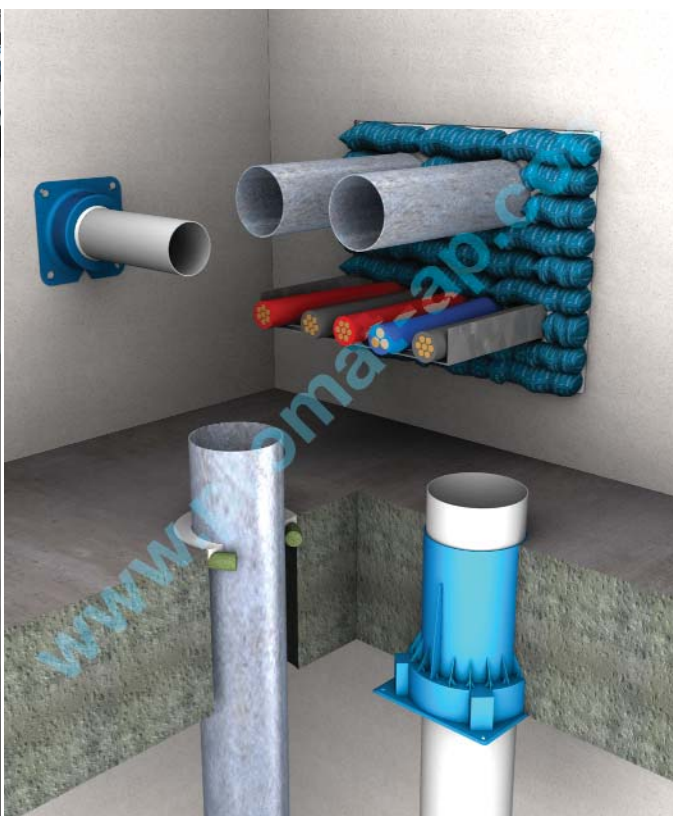


**Promat**



**PROMASEAL® FlexiWrap  
For Copper Pipes Wrapping Seals**





### Introduction

While fire resisting compartments are created to contain fire and smoke from spreading within building structures, this also presents a parallel threat as most concealed cavities between fire resisting walls and floors are interlinked. The importance of sealing gaps in this type of construction is therefore vital to ensure the compartmentation systems work to their maximum ability to save life and property. Such gaps are typically at service penetrations through walls and floors, but would also include gaps left for structural movement and gaps left due to poor workmanship.

Recognising this, the development of effective solutions to seal gaps at service penetrations has increased over the past few years and Promat has become a world leader in supplying such solutions. Note should be taken that every service passing through fire resistant building elements react in different ways to fire, so there is no single solution or product that will protect all services.

Services must be tested in accordance with the test method set out in appropriate standards. Tests are generally carried out in accordance with the General Principles of BS476: Part 20: 1987 or EN1366: Part 3 and 4 covering both penetration seals and linear joint seals respectively. In addition, many countries use the Australian Standard AS4072: Part 1: 2005 (Components for the Protection of Openings in Fire-Resistant Separating Elements), which specifies testing in accordance with the test method set out in AS1530: Part 4: 2005. It is important to note that although all of the above test methods can be considered similar, there are some major differences which can affect a particular application (see following pages for comparison of test methods).

### Failure Criteria

Failure is measured in terms of integrity and insulation. Stability (or Structural Adequacy) is not recorded for service penetrations, except those which are required to be loadbearing, e.g. PROMASTOP® Cement.

Integrity failure occurs when cracks, holes or openings occur through which flames or hot gases can pass. This is measured in different ways, depending upon the Standard used.

For instance, AS1530: Part 4: 2005 measure integrity failure as flaming on the unexposed face for a time greater than 10 seconds. Other Standards measure integrity failure using the same criteria but with different methods of measurement.

- Using a cotton pad, held against any gap, to see if the cotton pad ignites within 10 seconds; or
- If the gap is equal to or greater than 150mm x 6mm; or
- If a 25mm diameter probe can pass through a gap.

Insulation failure occurs when the temperature rise on the unexposed surface of the service, on the unexposed face of the building element 25mm from the penetration or on the seal itself exceeds 180°C. Insulation failure is inevitable on many metal service penetrations and is often waived as a failure criterion by local building regulations. Under such circumstances it is essential that combustibles be kept at least 100mm clear of these services at the point of penetration.

The PROMASEAL® and PROMASTOP® range of products were introduced to complement Promat's wide range of fire protection board systems.

Due to continuous development of draft fire test standards for this application, and the regular improvements and additions to the product range, only brief details are given in this section of the handbook concerning the products available at the time of writing.

For detailed information and advice on the current range of PROMASEAL® products, please contact Promat.

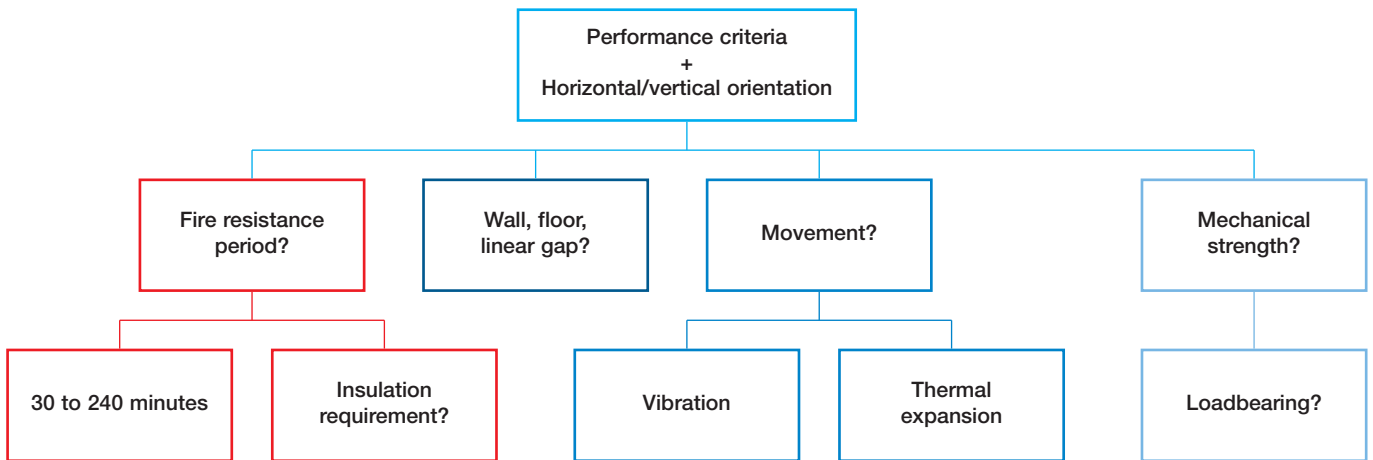
**IMPORTANT: Because of the diversity of applications and the on-going test programme, the above and the following notes in this section are of a general nature only and it is essential to confirm that the system specified or being installed is approved for use. Always contact Promat to confirm the specification is correct prior to usage.**

	British Standards BS476: Part 20: 1987	European Standards EN1366: Part 3: 2004/ EN1366: Part 4: 2006	Australian Standards AS4072: Part 1: 2005/ AS1530: Part 4: 2005	United States Standards ASTM E814: 1997/ UL1479: 1998
Orientation	Requires representative specimen in both orientations. For asymmetrical specimens, a test should be conducted from each side using separate specimens.	Representative or standard service configurations tested both in horizontal and vertical orientation.	Requires full size or representative specimen and testing in both horizontal and vertical orientation if intended for use in both orientation. Provide standard test configurations.	UL requires both orientations must be tested unless it can be demonstrated that testing in a single orientation does not affect the results. ASTM does not specify but there are differences in temperature and pressure measurements for the two orientations so that, by default, both would be required.
Test sample	Does not specify projection distances of through penetrating elements. The end conditions of pipes should reflect the "as installed" conditions.	The services shall be installed so that they extend 500mm on each side of the supporting construction, of which at least 300mm shall extend beyond the extremities of the sealing system. No part of the service shall be <200mm from the furnace wall or another service. Movement joint seals shall be installed in uniform design cross-sectional area and to maximum length that can be accommodated by separating test element. For non-movement joint seals a shorter length may be used subject to a minimum of 900mm.	The ends of the services shall be sealed on the exposed side of the furnace, to simulate normal extension through compartment. If the end condition of the the unexposed side is unspecified, it shall be left unsealed. The penetrating element shall extend 500mm into the furnace and 2000mm outside the furnace for plastic pipes, all other elements are 500mm inside and outside the furnace.	The penetrating item should extend into the furnace by 300mm and out of it by 910mm. The end of the item on the exposed face is capped, but uncapped on the unexposed side, unless is it to represent a closed system in which case it may be capped. The periphery of the specimen should not be closer than 1.5 the thickness of the assembly, or 300mm to the furnace edge, whichever is greater.
Conditioning	Materials shall, at time of test, be at a condition approximating the state of strength and moisture content that would be expected in normal service.	The test specimens shall not be tested until both strength and moisture content approximate values the service expects to attain.	The test specimens shall not be tested until both strength and moisture content approximate values the service expects to attain.	Prior to fire testing, each test sample and test assembly is to be conditioned, if necessary, to provide a moisture condition likely to exist in similarly constructed buildings.
Protection of assembly and sample	Ambient temperature should be within 5-35°C prior to heating period, and temperature measurements on the unexposed face must be in draught-free conditions.	Provide reference for test frames and the ambient condition must be 20°C(±10°C) at the commencement of test. During testing, the laboratory temperature shall not decrease >5°C or increase by >20°C for all insulated separating elements while they still satisfy the insulation criterion.	Not specified except that the initial furnace temperature must be not less than 10°C and not more than 40°C.	The testing equipment and test sample are to be protected from any condition of wind or weather that might influence the test results (i.e. ambient temperature at the time of testing must be within 10-32°C while the velocity of air across the sample must not exceed 1.3m per second).
Pressure differential	At mid height of vertical systems, the pressure differential is 15Pa, and the same pressure 100mm below horizontal systems.	For a vertical system with height <1000mm, the pressure differential should be 15±2Pa. If the height >1000mm, pressure differential should be 20±2Pa at the top of the specimen. In this case penetrations should be included in the zone where the pressure is >10Pa.  For a horizontal system, the pressure differential should be 20±2Pa at 100±10mm under the supporting construction.	Not less than 20Pa at notional 100mm below the soffit height of horizontal element or at a level with lowest point of the penetration seal of a vertical element it should be 15Pa±3.	Except for the first 10 minutes of the test, the furnace pressure shall be at least 2.5Pa greater than the pressure on the unexposed side of the following locations:  a) Wall – at lowest elevation of the test specimen;  b) Floors – at the location of the pressure probes.  Test sponsor may also specify a unique pressure condition in which case it must be maintained throughout the duration of the test, excluding the first 10 minutes, within 20% of the specification.

	British Standards BS476: Part 20: 1987	European Standards EN1366: Part 3: 2004/ EN1366: Part 4: 2006	Australian Standards AS4072: Part 1: 2005/ AS1530: Part 4: 2005	United States Standards ASTM E814: 1997/ UL1479: 1998
Integrity	<ul style="list-style-type: none"> <li>a) Cotton pad test;</li> <li>b) Gap gauge;</li> <li>c) Sustained flaming of more than 10 seconds.</li> </ul>	<ul style="list-style-type: none"> <li>a) Cotton pad test is generally performed. For penetration seal tests the use of reduced size cotton pad is permitted if necessary.</li> <li>b) Whilst gap gauge is used for measurement in general test specimens, it shall not be used for evaluation of penetration and linear joint seals tests.</li> <li>c) Sustained flaming.</li> </ul>	<p>Failed when:</p> <ul style="list-style-type: none"> <li>a) Cotton pad test, or</li> <li>b) Flaming takes place at the unexposed face of the specimen for a period exceeding 10 seconds.</li> </ul>	<p>Shall not permit the passage of flame through-out the fire test, or water through the hose stream test. Mandatory for all ratings in both standards, i.e. ASTM and UL.</p>
Insulation	<p>The insulation of the specimen is judged to have failed if the temperature on the unexposed side and on penetrations reaches 180°C above the initial temperature.</p>	<p>The insulation of the specimen is judged to have failed if the temperature on the unexposed side and on penetrations reaches 180°C (K) above its initial temperature.</p>	<p>The criteria for failure of insulation is if the temperature of any of the thermocouples on the unexposed side reaches 180°C above the initial temperature.</p>	<p>Shall not permit the passage of flame through the fire test, or water through the hose stream test or allow the temperature to increase by 180°C on the unexposed side. Mandatory for T rating in both standards.</p>
Hose stream test	<p>No specification.</p>	<p>No specification.</p>	<p>No specification.</p>	<p>For both F and T ratings, a duplicate specimen is subjected to a fire exposure test for period half of the desired rating but not more than 60 minutes. Immediately after the fire exposure, the specimen shall be subject to the hose stream test. Same test assembly can be used for both tests but must take place within 10 minutes from the completion of the fire test.</p>
Specification	<ul style="list-style-type: none"> <li>a) Integrity;</li> <li>b) Insulation;</li> <li>c) Loadbearing capacity where applicable.</li> </ul>	<ul style="list-style-type: none"> <li>a) Integrity;</li> <li>b) Gap gauge (not applicable for penetration and linear joints seal tests);</li> <li>c) Cotton pad;</li> <li>d) Insulation;</li> <li>e) Insulation area 2 (if the test element incorporating two discrete areas of different thermal insulation).</li> </ul>	<p>AS1530: Part 4 states results to be expressed in:</p> <ul style="list-style-type: none"> <li>a) Structural adequacy;</li> <li>b) Integrity;</li> <li>c) Insulation;</li> <li>d) Resistance to incipient spread of flame.</li> </ul>	<p>Specified in terms of F rating which require a hose stream test, and T rating which does not require a hose stream test, measures the insulation. UL have an additional L rating for air-leakage.</p>
Reporting	<ul style="list-style-type: none"> <li>a) Temperature data from all specified critical thermocouple;</li> <li>b) A detailed description of all penetrating services;</li> <li>c) A detailed description of the test construction.</li> </ul>	<p>In addition to requirements of EN1363: Part 1, the following are necessary for penetration seal tests:</p> <ul style="list-style-type: none"> <li>a) For tests on pipes, statement of the pipe end configuration (capped or uncapped);</li> <li>b) For cables, the cable dimensions;</li> <li>c) For metallic pipes, the pipe dimensions;</li> <li>d) For unsupported seals, the maximum area free of services;</li> <li>e) Whether multiple penetrations have been tested in a single test construction.</li> </ul> <p>For linear joint seal test, the following shall be included:</p> <ul style="list-style-type: none"> <li>a) Full description of any procedure used to induce relative movement of the seal faces;</li> <li>b) Orientation of test specimen;</li> <li>c) The limits of the range of nominal widths and the movement capability successfully tested;</li> <li>d) Full description of the splicing method(s) used.</li> </ul>	<p>In addition to the requirements of AS1530: Part 3, the report should have:</p> <ul style="list-style-type: none"> <li>a) Temperature data from all specified critical thermocouple;</li> <li>b) A detailed description of all penetrating services;</li> <li>c) A detailed description of the test construction.</li> </ul>	<p>Report must have:</p> <ul style="list-style-type: none"> <li>a) Description of assembly and materials;</li> <li>b) Relative humidities;</li> <li>c) Temperature recordings;</li> <li>d) The achieved rating;</li> <li>e) Location of pressure probes and differential pressure of the test;</li> <li>f) Record of all observations;</li> <li>g) Correction factor.</li> </ul>
Commentary	<p>For positions of thermocouples and other items not specified in this standard, laboratories refer to the EN standard.</p>	<p>These standards are now in effect for use within the industry.</p>	<p>Comprehensive and simple standard configurations, as well as details on permissible variations.</p>	<p>UL also have an addition L rating which is to be reported as the largest leakage rate determined from the air leakage test.</p>

### Which System(s) To Use

As penetrations can occur in various building elements, there are a number of important criteria that require consideration in determining the appropriate type of sealing system to be used, simplified in the following chart.

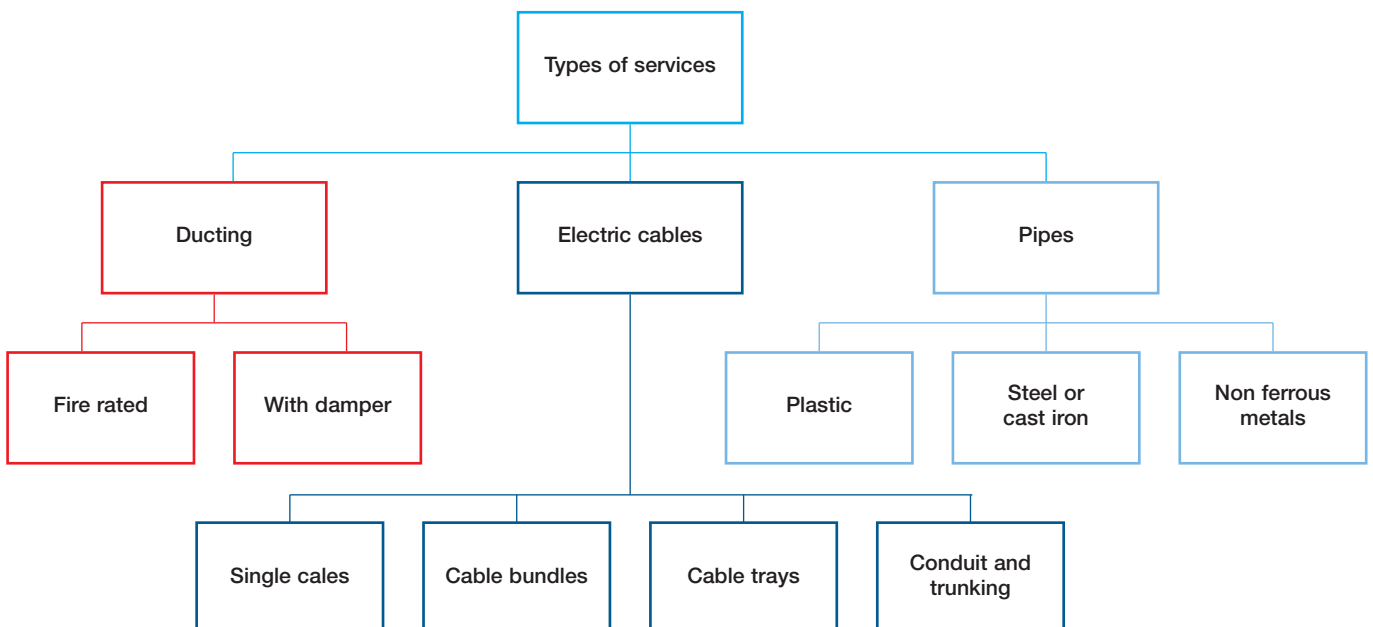


### Limitations of Use

- Size of opening
- Penetration services
- Flexibility of seal(s)
- Smoke or gas lightness
- Ambient conditions
- Design life
- Frequency of change to services
- Parent construction (type of substrate)

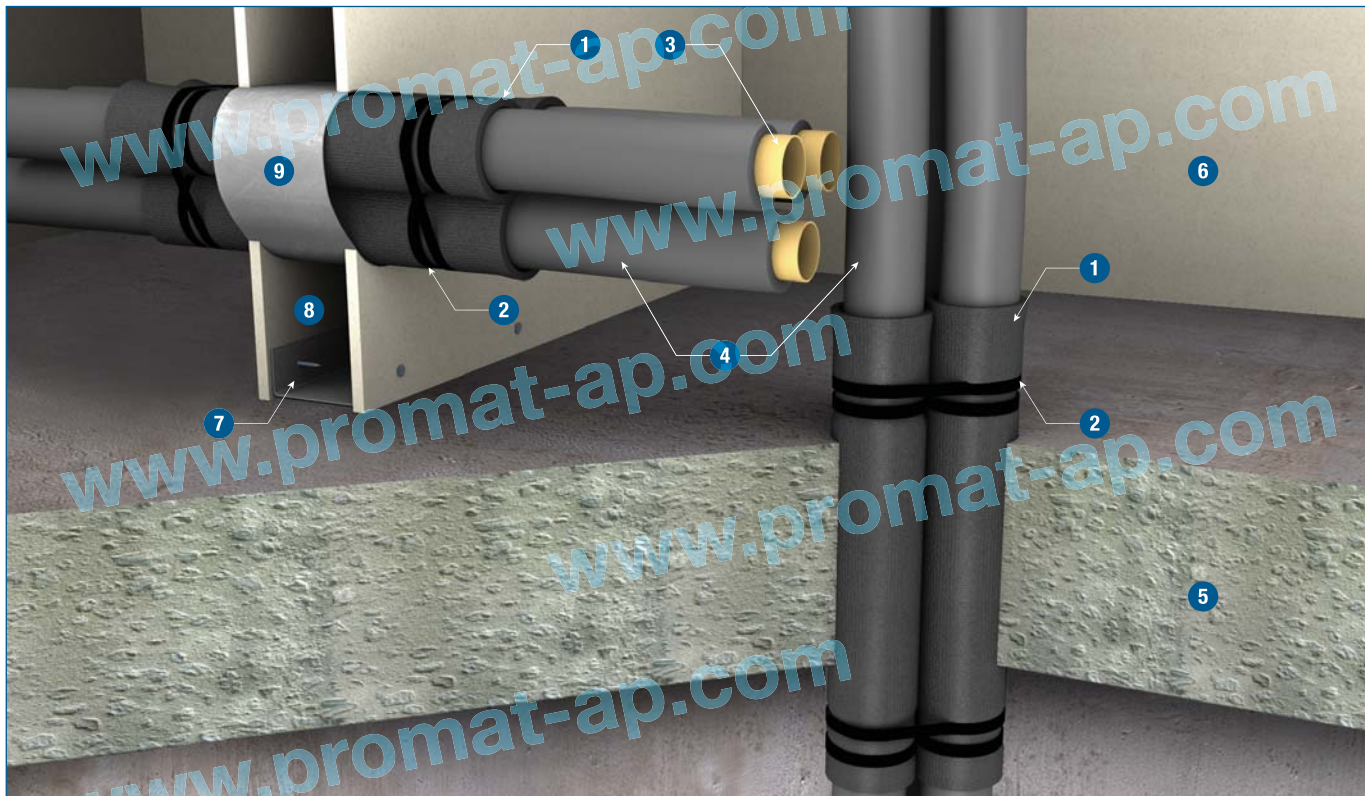
### Special Considerations

In instances where electrical and mechanical services are involved, the selection of penetration sealing system also require the following additional elements to be carefully considered.



### Comptability Considerations

- Intumescent systems in lightweight constructions
- Rigid seals in "dynamic" barriers
- Large spans and thermal expansion
- Smoke or toxicity in populated zones
- Dusty or friable materials in clean-room applications



### TECHNICAL DATA

- |  |   |
|--|---|
| <ul style="list-style-type: none"> <li><b>1</b> For FRL up to -/240/120 PROMASEAL® FlexiWrap</li> <li><b>2</b> Cable tie</li> <li><b>3</b> Copper pipes</li> <li><b>4</b> Combustible insulation layer</li> <li><b>5</b> Masonry or concrete floor slab, with fire resistance greater than or equal to that of the installed system.</li> <li><b>6</b> Lightweight partition system</li> </ul> | <ul style="list-style-type: none"> <li><b>7</b> Partition framing system</li> <li><b>8</b> Where PROMASEAL® FlexiWrap is used to clad pipes passing through a lightweight partition, the cavity must be closed off by passing a steel sleeve through both lining boards and scaling the cavity.</li> <li><b>9</b> Steel sleeve</li> </ul> <p><b>NOTE:</b> PROMASEAL® AN Acrylic Sealant to be liberally applied to all joints and contact points between the barrier and services, and the barrier and the substrate (not shown above). PROMASEAL® FlexiWrap is not for use on plastic pipes.</p> |
|--|---|

It is common that some services such as copper pipes for air-conditioning units are wrapped with a layer of insulation in order to improve the thermal efficiency of the units. The insulation in general is made of a combustible material and as such, when penetrating fire resistance elements such as walls and floors, it could present a risk of fire and smoke breaching the integrity of the system.

Manufactured by using Promat Grafitex® Technology, PROMASEAL® FlexiWrap is designed to provide fire resistance where combustible insulation is used as a thermal lagging around metal pipes.

PROMASEAL® FlexiWrap is supplied in sheet form of 450mm x 1125mm x 6mm thick.

PROMASEAL® FlexiWrap has been successfully tested and assessed to AS1530: Part 4 and BS476: Part 20 for both walls and floors, achieving a fire resistance level of up to 120 minutes. For higher fire resistance please consult Promat Technical Department.

### Installation Guide

For either floor or wall applications, the installation method is simple. If the penetration involves only one insulated pipe, simply wrap the pipe with PROMASEAL® FlexiWrap and secure with cable ties, minimum one at either end. Note that the wraps should protrude a minimum of 50mm from each face of the substrate. If groups of insulated pipes are involved, individually wrap each pipe with one layer of PROMASEAL® FlexiWrap. To ensure the wrap stays in place provide ties to two locations, one each side of the penetration.

Once wrapped, the area where pipes penetrate the substrate can be backfilled with PROMASEAL® Mortar or other fire stopping methods if necessary, depending on the size of opening and the type of substrate. For close fitting openings, the sealing can be completed using PROMASEAL® AN Acrylic Sealant.

**NOTE:** Where pipes pass through a lightweight partition construction, the cavity must be closed off using a steel sleeve.

### Recommended Specification

Where appropriate, the specified insulated penetrations through floor/wall should be properly fire stopped using PROMASEAL® FlexiWrap capable of providing fire resistance of -/120/120 when tested and assessed in accordance with AS1530: Part 4: 2005 and/or BS476: Part 20: 1987. Installation of any fire stopping product should be carried out according to the manufacturer's recommendations. Please consult Promat for more details.

For latest information of the Promat Asia Pacific organisation, please refer to [www.promat-ap.com](http://www.promat-ap.com)

## ASIA PACIFIC HEADQUARTERS

**Promat International (Asia Pacific) Ltd.**  
Unit 19-02-01, Level 2 PNB Damansara  
No.19 Lorong Dungun, Damansara Heights  
50490 Kuala Lumpur  
MALAYSIA  
Tel: +60 (3) 2095 5111  
Fax: +60 (3) 2095 6111  
Email: [info@promat-ap.com](mailto:info@promat-ap.com)

## AUSTRALIA

**Promat Australia Pty. Ltd.**  
1 Scotland Road  
Mile End South, SA 5031  
Tel: 1800 PROMAT (776 628)  
Fax: +61 (8) 8352 1014  
Email: [mail@promat.com.au](mailto:mail@promat.com.au)

### New South Wales Office **Promat Australia Pty. Ltd.**

Unit 1, 175 Briens Road  
Northmead, NSW 2152  
Tel: 1800 PROMAT (776 628)  
Fax: +61 (2) 9630 0258  
Email: [mail@promat.com.au](mailto:mail@promat.com.au)

### Victoria Office

**Promat Australia Pty. Ltd.**  
Suite 205, 198 Harbour Esplanade  
Docklands, VIC 3008  
Tel: 1800 PROMAT (776 628)  
Fax: 1800 334 598  
Email: [mail@promat.com.au](mailto:mail@promat.com.au)

### Queensland Office

**Promat Australia Pty. Ltd.**  
Unit 2 Level 1  
49 Gregory Tce  
Spring Hill, QLD 4000  
Tel: 1800 011 376  
Fax: 1800 334 598  
Email: [mail@promat.com.au](mailto:mail@promat.com.au)

## CHINA

**Promat China Ltd.**  
Room 503, Block B, Qi Lin Plaza  
13-35 Pan Fu Road  
510180 Guangzhou  
Tel: +86 (20) 8136 1167  
Fax: +86 (20) 8136 1372  
Email: [info@promat.com.cn](mailto:info@promat.com.cn)

### Beijing Office

**Promat North China**  
*(Division of Promat China Ltd.)*  
Room 1507 Building 5, SOHO Xiandaicheng  
No.88 Jianguo Road, Chaoyang District  
100022 Beijing  
Tel: +86 (10) 8589 1254  
Fax: +86 (10) 8589 2904  
Email: [info@promat.com.cn](mailto:info@promat.com.cn)

For Promat International groups worldwide:  
[www.promat-international.com](http://www.promat-international.com)

1. This document is produced on the basis of information and experience available at the time of preparation. Promat is constantly reviewing and updating all of its test data and reserves the right to change products and specifications without notice.
2. Promat is not responsible if recipients of fire test reports, assessments or literature incorrectly interpret said contents and use products based on those interpretations.

## HONG KONG

**Promat International (Asia Pacific) Ltd.**  
Room 1010, C.C. Wu Building  
302-308 Hennessy Road  
Wanchai  
Tel: +852 2836 3692  
Fax: +852 2834 4313  
Email: [apromath@promat.com.hk](mailto:apromath@promat.com.hk)

## INDIA

**Promat International (Asia Pacific) Ltd.**  
*(India Representative Office)*  
610-611, Ansal Imperial Tower  
C-Block, Community Centre  
Naraina Vihar, Naraina  
110028 New Delhi  
Tel: +91 (11) 2577 8413  
Fax: +91 (11) 2577 8414  
Email: [info-india@promat-asia.com](mailto:info-india@promat-asia.com)

### Bangalore Office

**Promat International (Asia Pacific) Ltd.**  
*(India Representative Office)*  
Cabin No.BC-9 & BC-10  
Oculus Workspaces, No.66/1, 2nd Floor  
Coles Road, Frazer Town  
560005 Bangalore  
Tel: +91 (80) 4031 4151  
Fax: +91 (80) 4125 2135  
Email: [info-india@promat-asia.com](mailto:info-india@promat-asia.com)

### Mumbai Office

**Promat International (Asia Pacific) Ltd.**  
*(India Representative Office)*  
Stylus Serviced Offices  
Ground Floor, Velocity  
Phase 1, Logitech Park  
Andheri Kurla Road, Andheri East  
400072 Mumbai  
Tel: +91 (22) 6769 4567  
Fax: +91 (22) 6769 4568  
Email: [info-india@promat-asia.com](mailto:info-india@promat-asia.com)

## MALAYSIA

**Promat (Malaysia) Sdn. Bhd.**  
Unit 19-02-01, Level 2 PNB Damansara  
No.19 Lorong Dungun, Damansara Heights  
50490 Kuala Lumpur  
Tel: +60 (3) 2095 8555  
Fax: +60 (3) 2095 2111  
Email: [info@promat.com.my](mailto:info@promat.com.my)

## SINGAPORE

**Promat Building System Pte. Ltd.**  
10 Science Park Road, #03-14 The Alpha,  
Singapore Science Park II  
Singapore 117684  
Tel: +65 6776 7635  
Fax: +65 6776 7624  
Email: [info@promat.com.sg](mailto:info@promat.com.sg)

Your local Promat supplier

